



BSCI Word Merge iPart – Install & Configure Notes - iMIS 15.1.3.xx

Contents

File Component Installs

Content Type Import

Add iPart to Content & Configure

The install is comprised of two parts, a file system install and an iMIS 15 CMS content type definition import. Download and unzip install folder to target server where the iMIS application is installed.

Step 1 - File Component Installs

Run batch file `deploy_ipart.bat`. You should have admin rights to the system to perform this step. You should also be prepared to stop ASI publishing services if necessary on the server.

The BSCI Word Merge iPart has the following file system installs:

`/net/bin`

`BSCI.iPart.MSWordMergeTool.dll` (BSCI iPart library)
`DocumentFormat.OpenXml.dll` (Office Open XML File Format library)
`BSCI.dll` (BSCI iBO, IQA and Logger libraries)

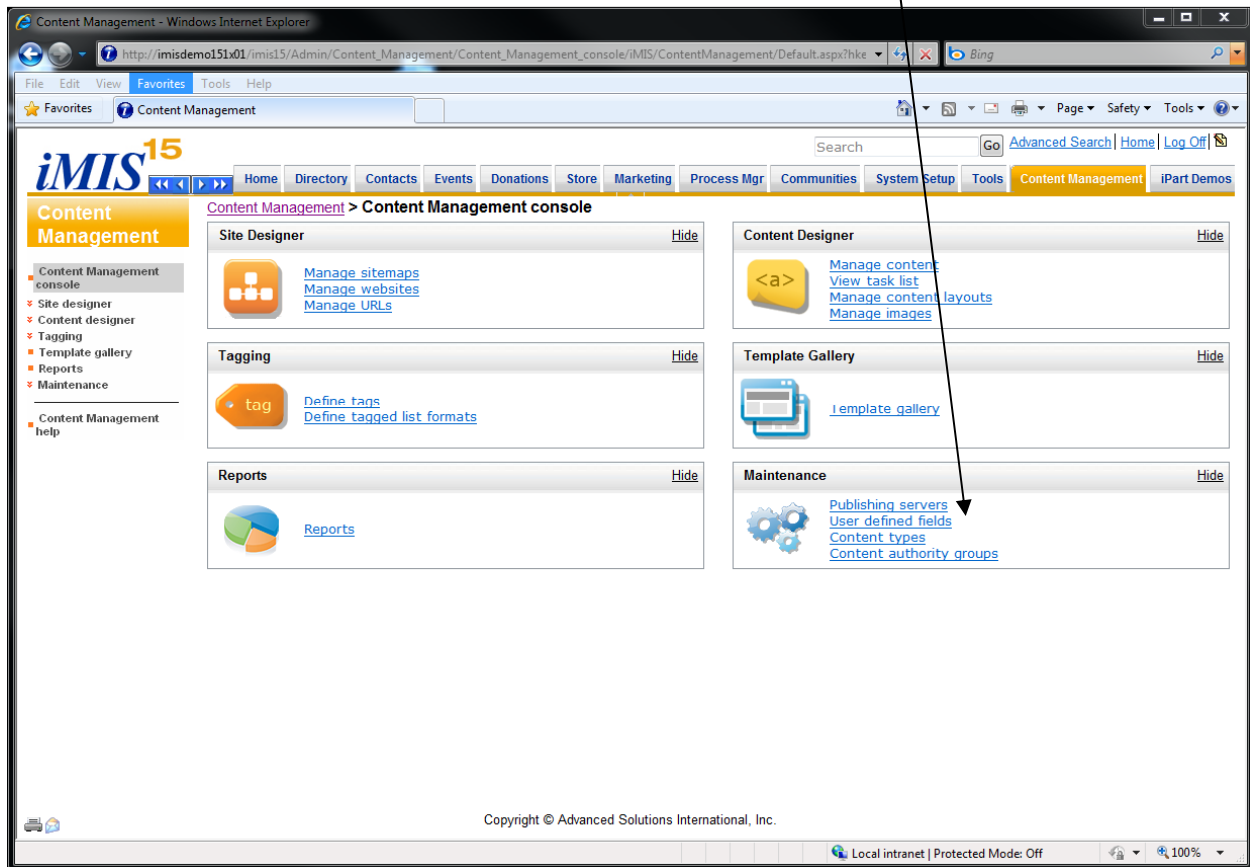
`/net/iparts/bsci`

`BSCI_MSWordMergeTool_Display.ascx` (main iPart user gui)
`BSCI_MSWordMergeTool_Config.ascx` (main iPart config gui)

Check after running the deployment batch file that the target files are in the correct folders.

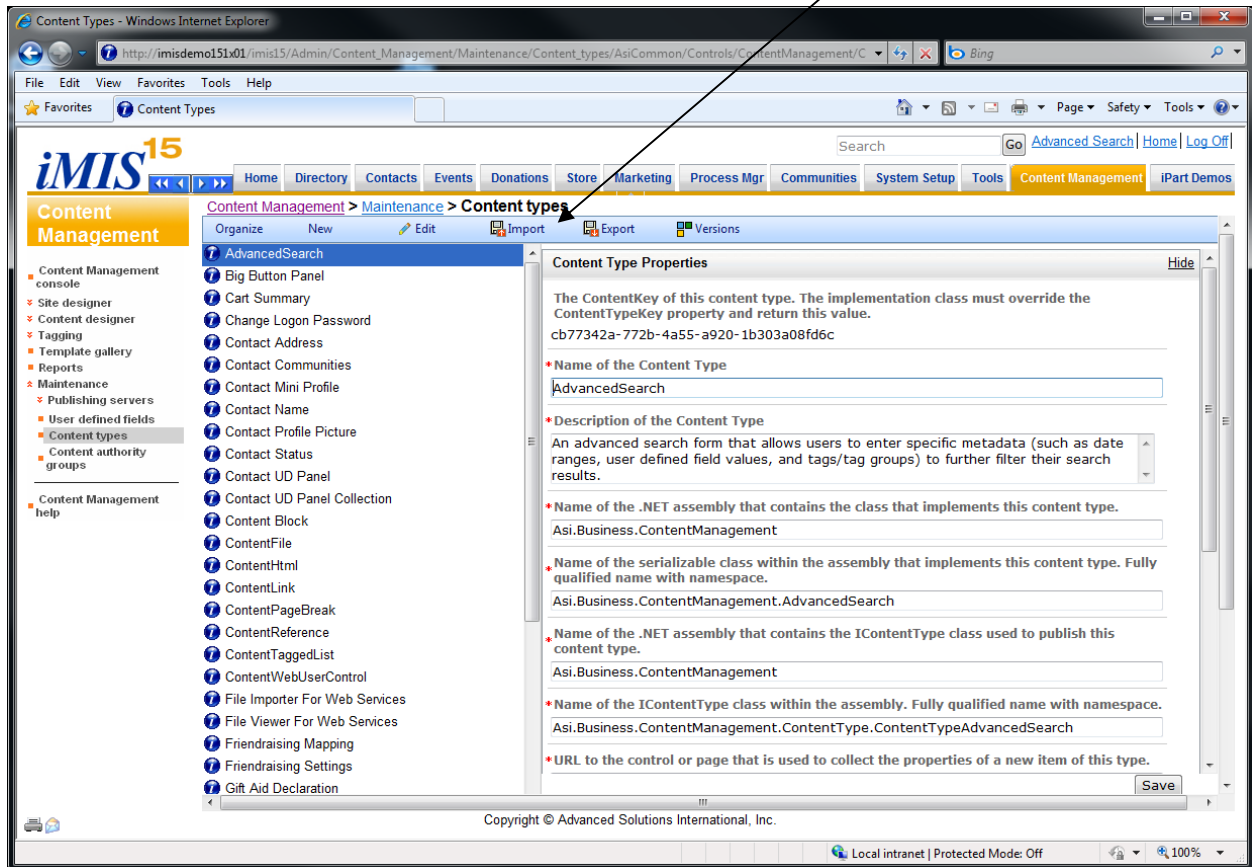
Step 2 - Content Type Import

Drill out to the main menu in Content management and select the 'Content types' link under 'Maintenance'.

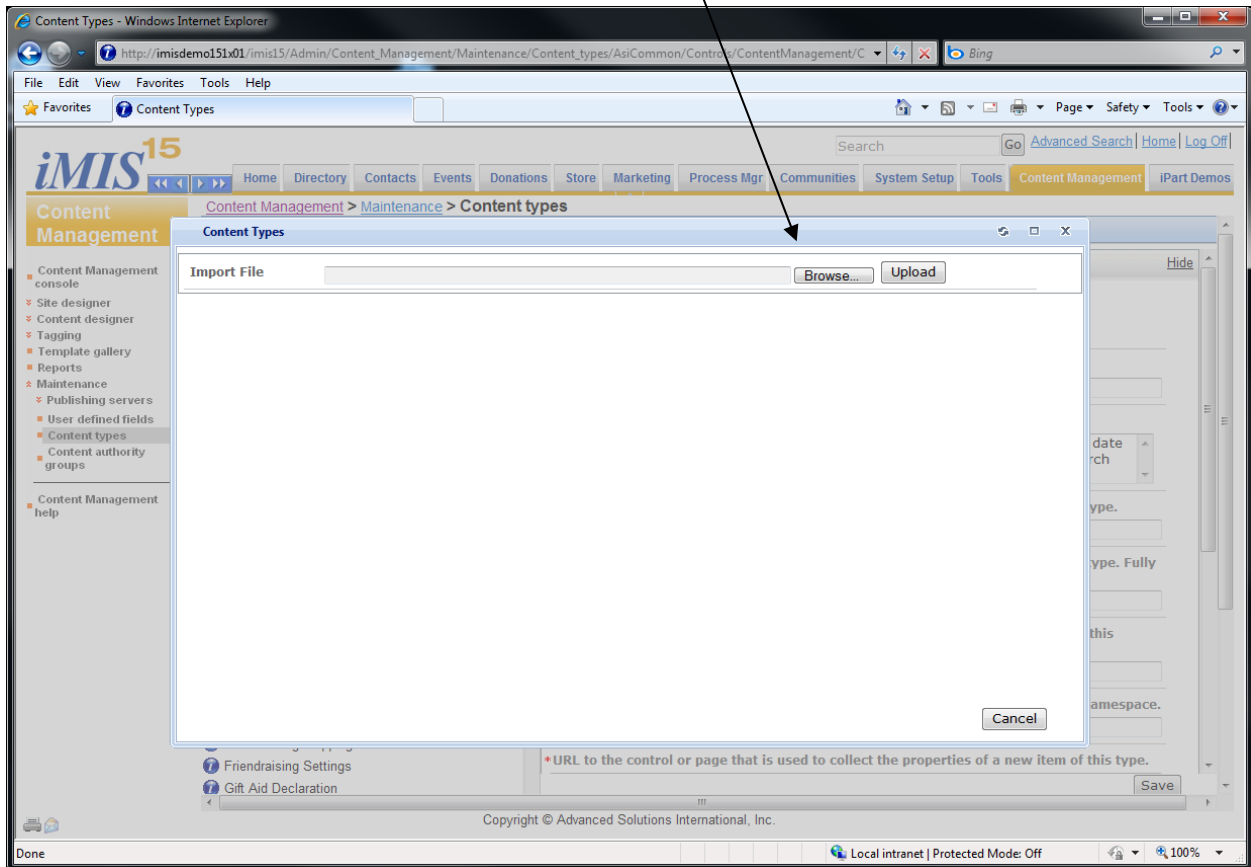


The screenshot displays the iMIS 15 Content Management console in a Windows Internet Explorer browser window. The browser's address bar shows the URL: http://imisdemo151.x01/imis15/Admin/Content_Management/Content_Management_console/IMIS/ContentManagement/Default.aspx?hke. The page features a navigation menu at the top with options like Home, Directory, Contacts, Events, Donations, Store, Marketing, Process Mgr, Communities, System Setup, Tools, Content Management, and iPart Demos. The main content area is titled "Content Management console" and is organized into several panels: Site Designer, Content Designer, Tagging, Template Gallery, Reports, and Maintenance. The Maintenance panel is expanded, showing links for Publishing servers, User defined fields, Content types, and Content authority groups. A black arrow points from the text above to the "Content types" link in the Maintenance panel. The footer of the page includes the copyright notice "Copyright © Advanced Solutions International, Inc." and the status "Local intranet | Protected Mode: Off".

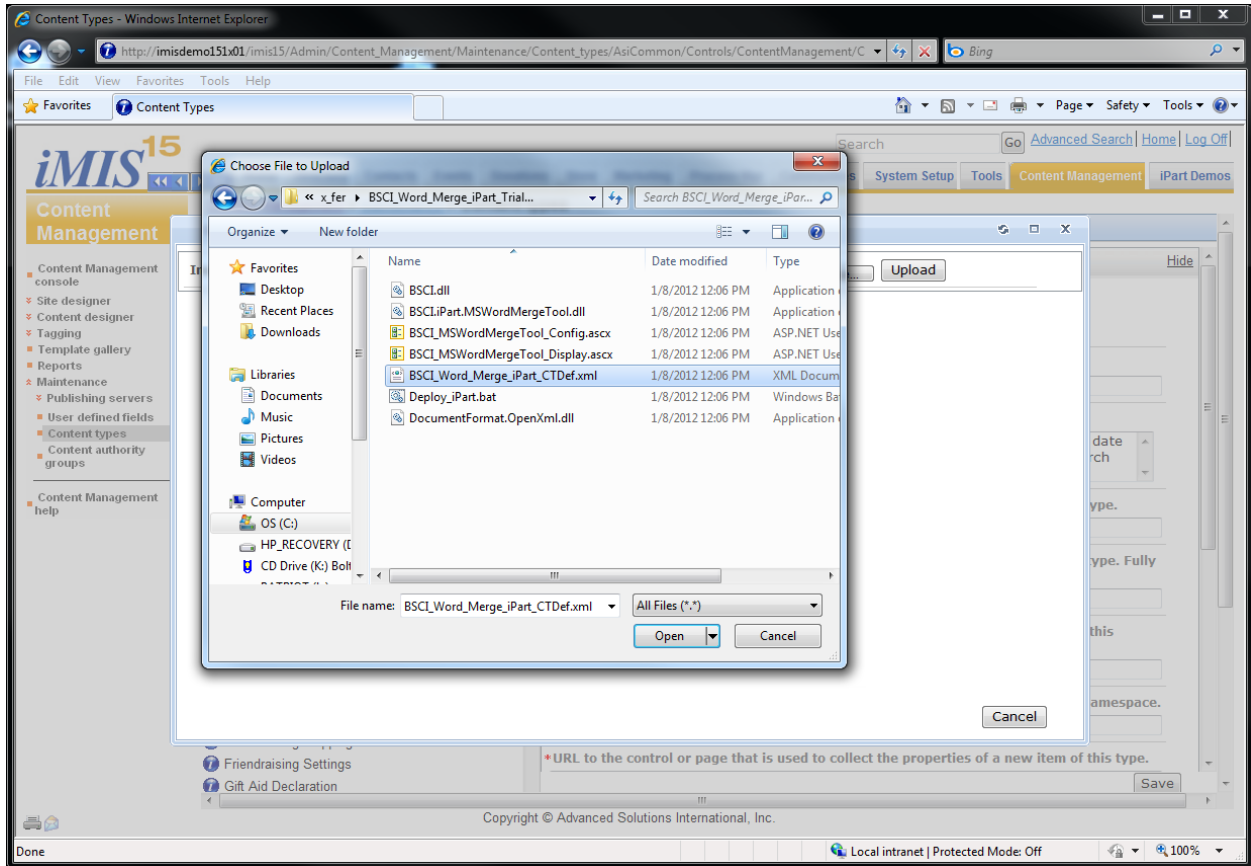
Then when the content types maintenance page opens select the 'Import' link button.



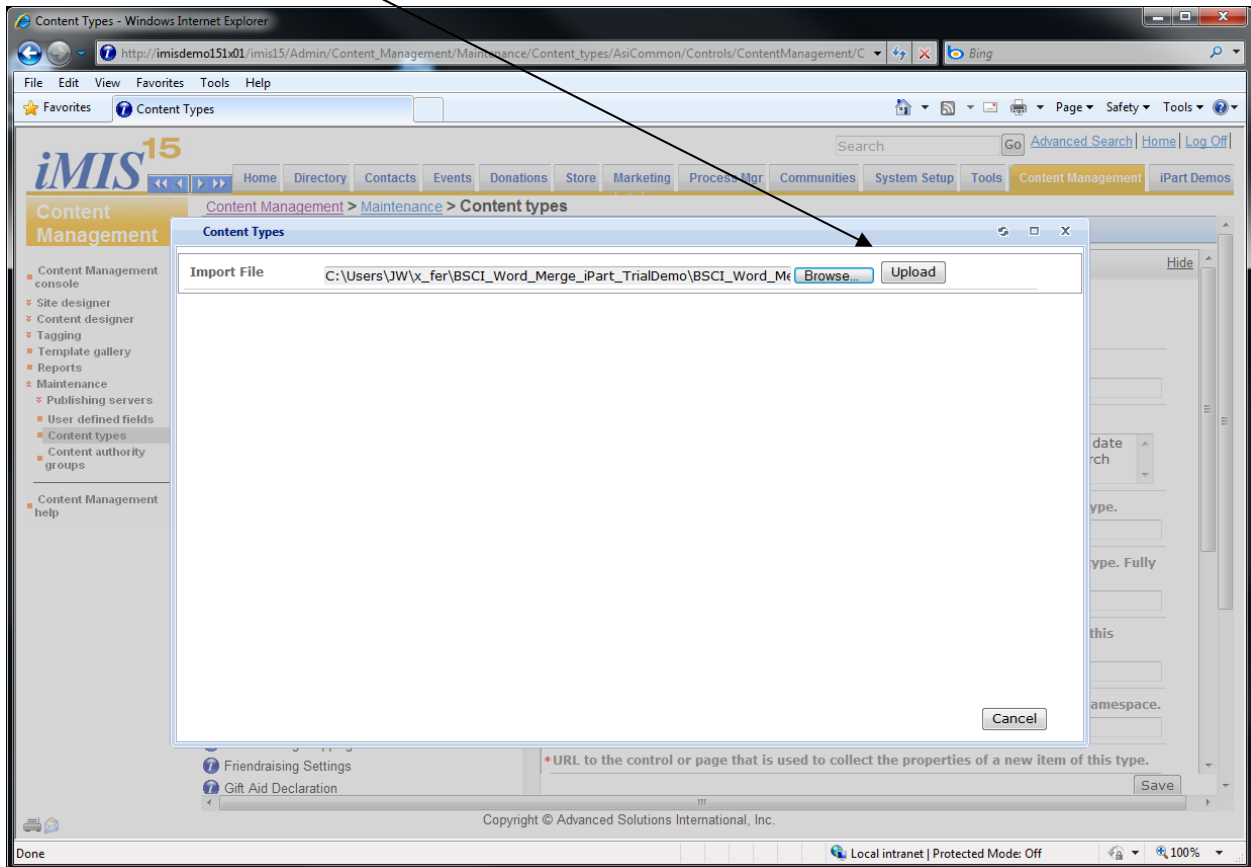
The 'Content Types' page should display. Click the 'Browse..' button.



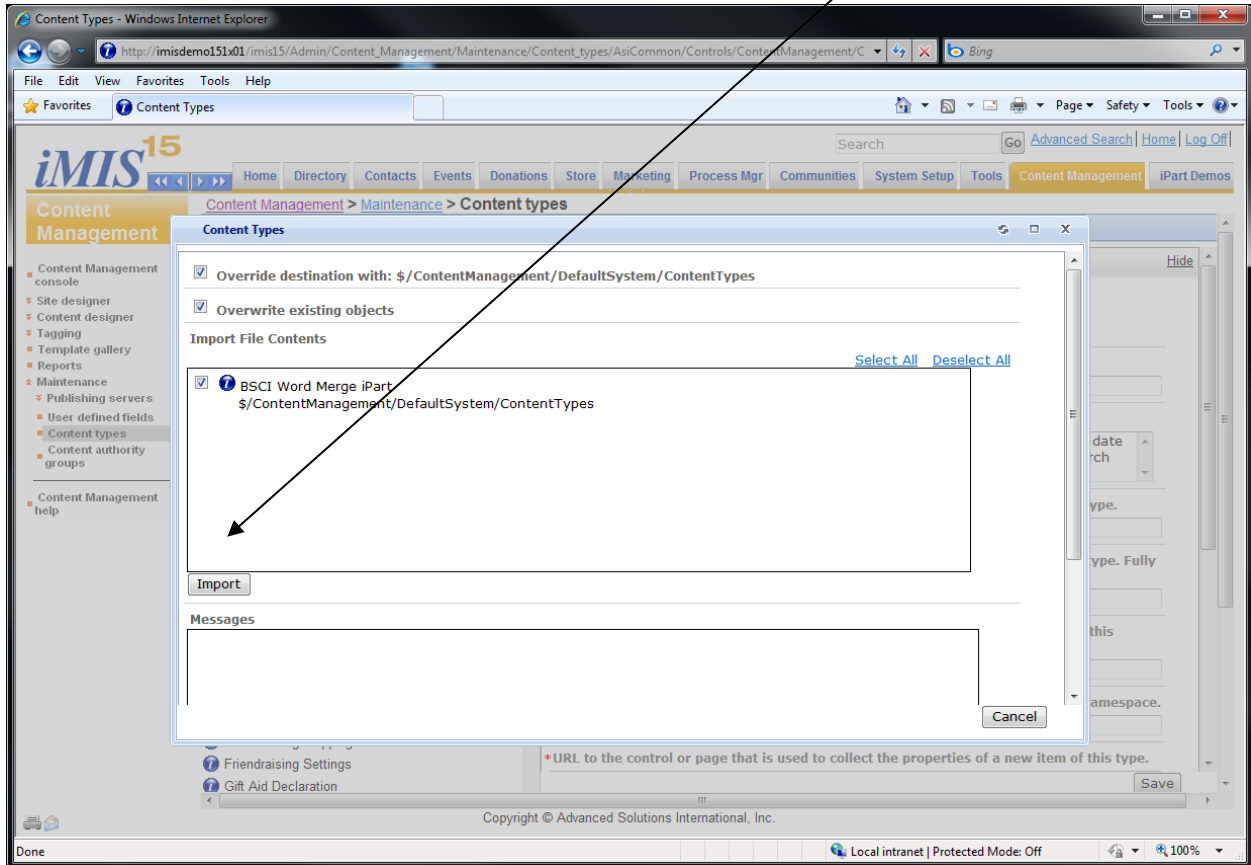
After clicking the 'Browse..' button and drill out to the BSCI iPart install folder you unzipped and placed on the server. Select the BSCI_Word_Merge_iPart_CTDef.xml file and click 'Open'.



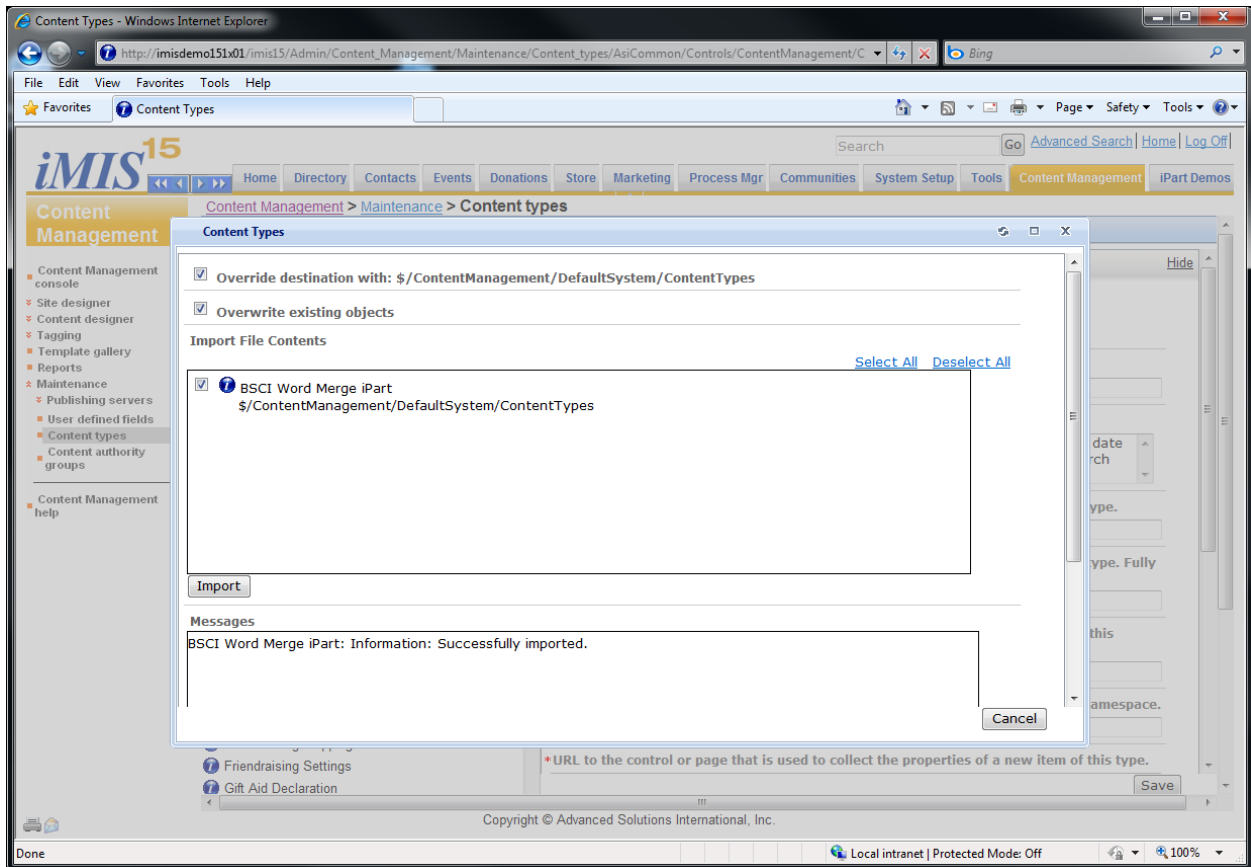
Now click 'Upload'.



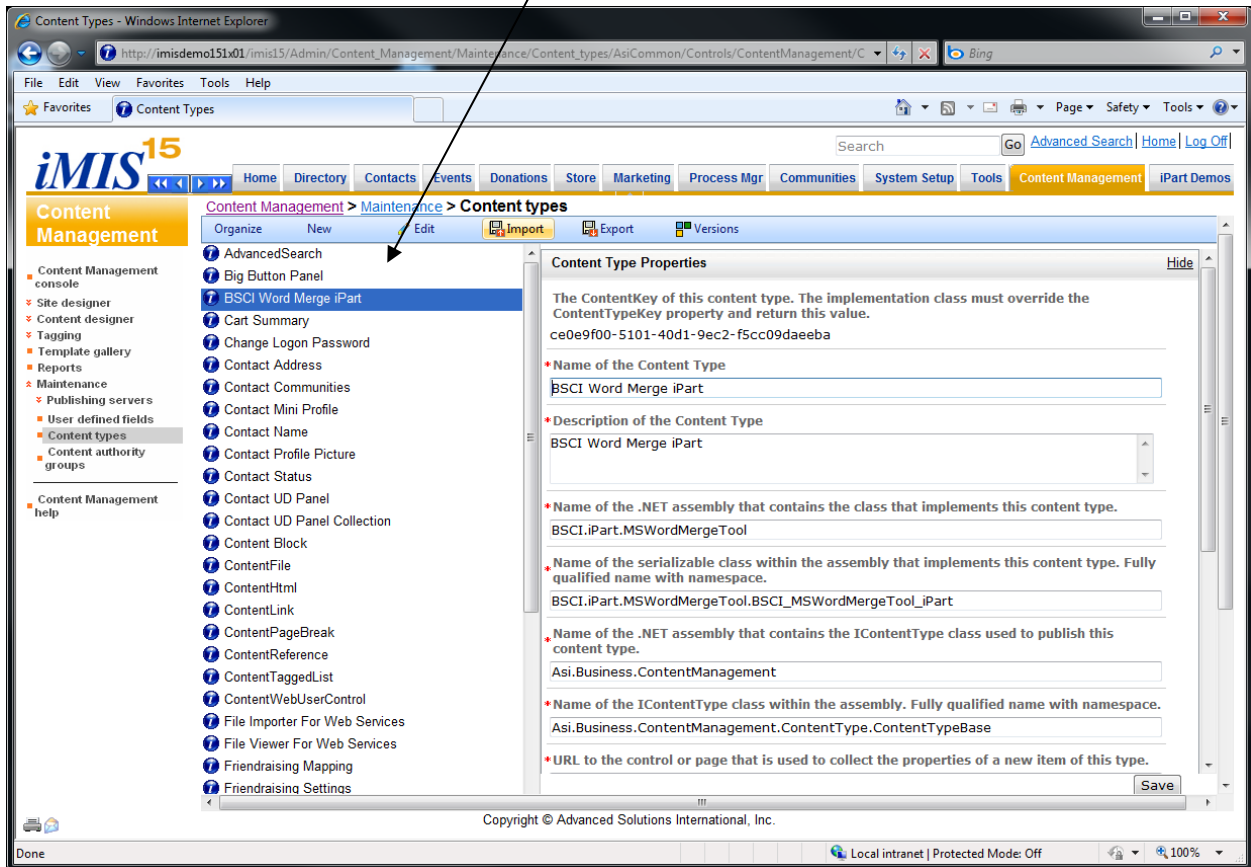
Insure the 'Override destination with..' check box is checked and click 'Import'



Insure messaging indicates success.



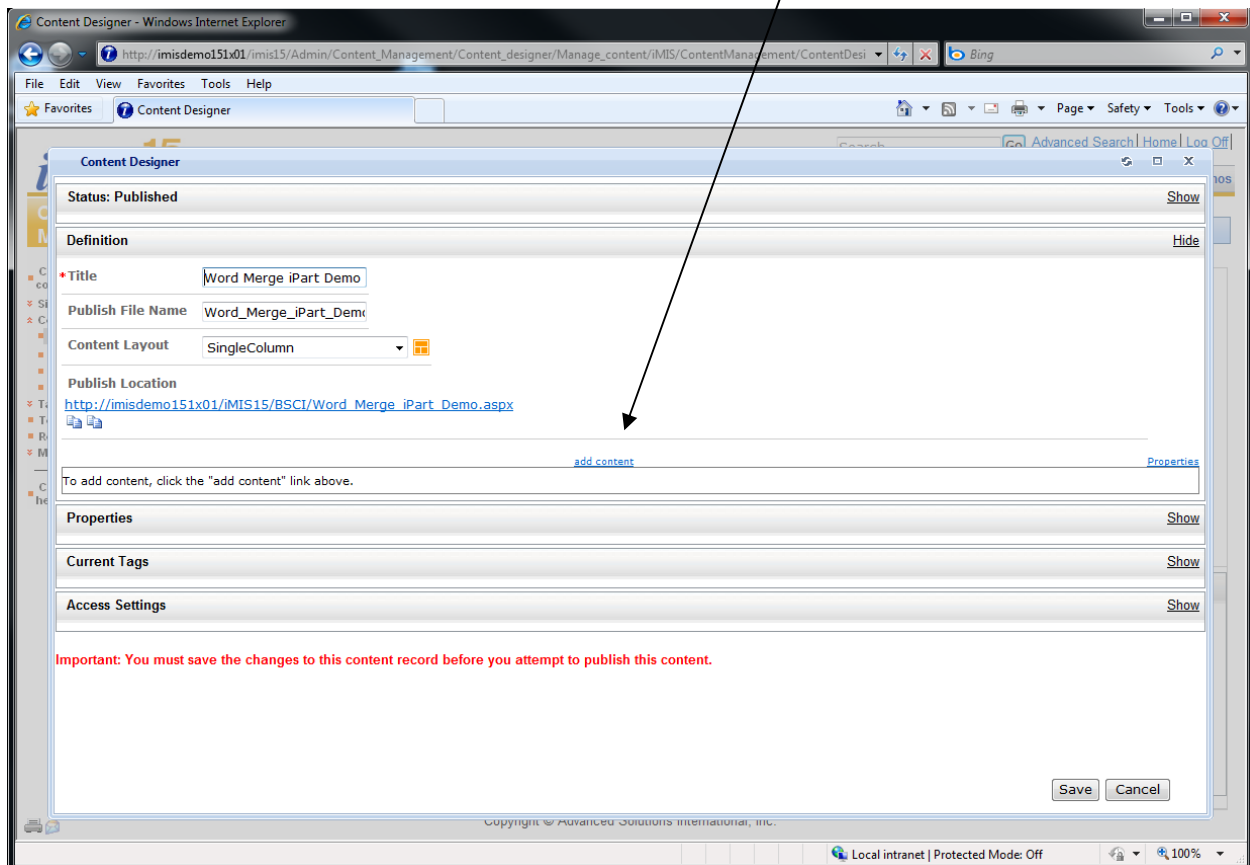
Now you should see the iPart loaded into the CMS and ready to be used on a site in content.



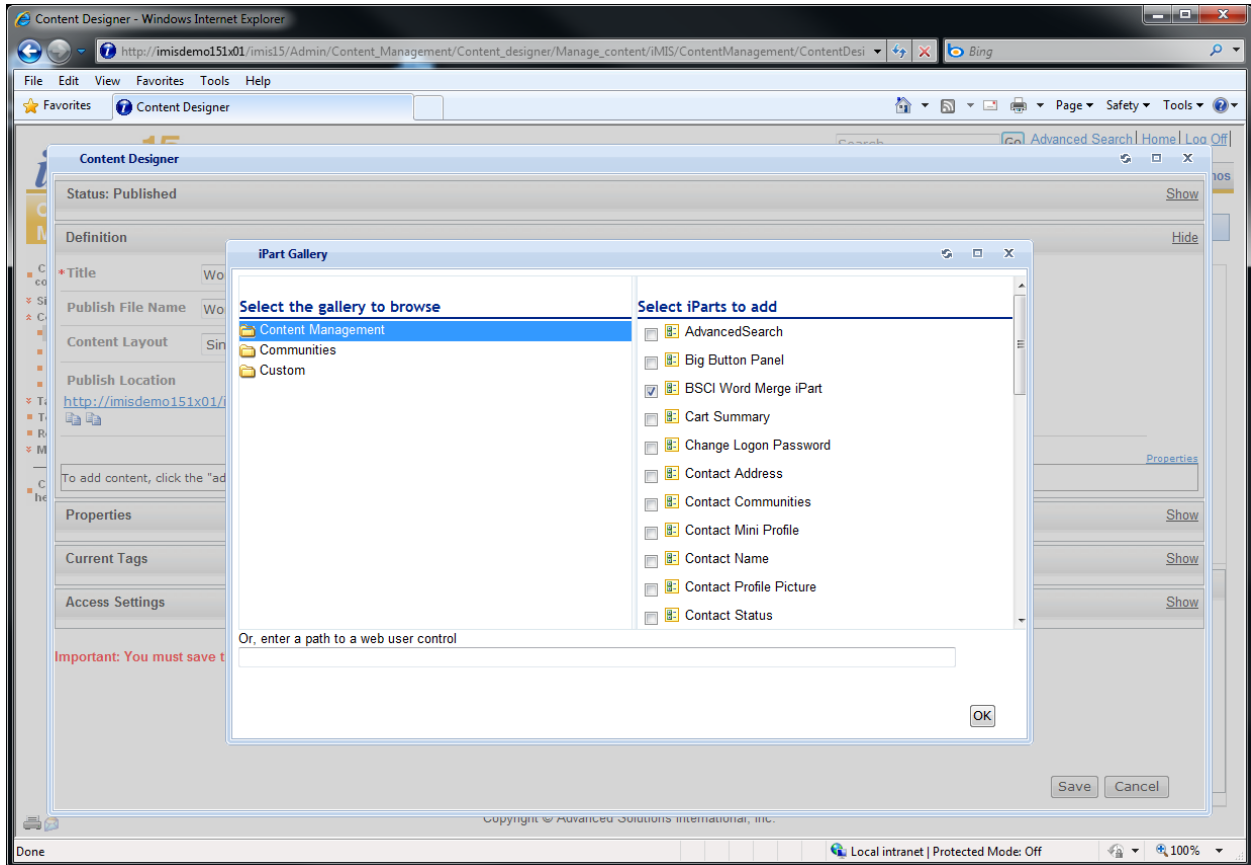
Step 3 - Add iPart to Content & Configure

Now the Word Merge iPart can be consumed in content.

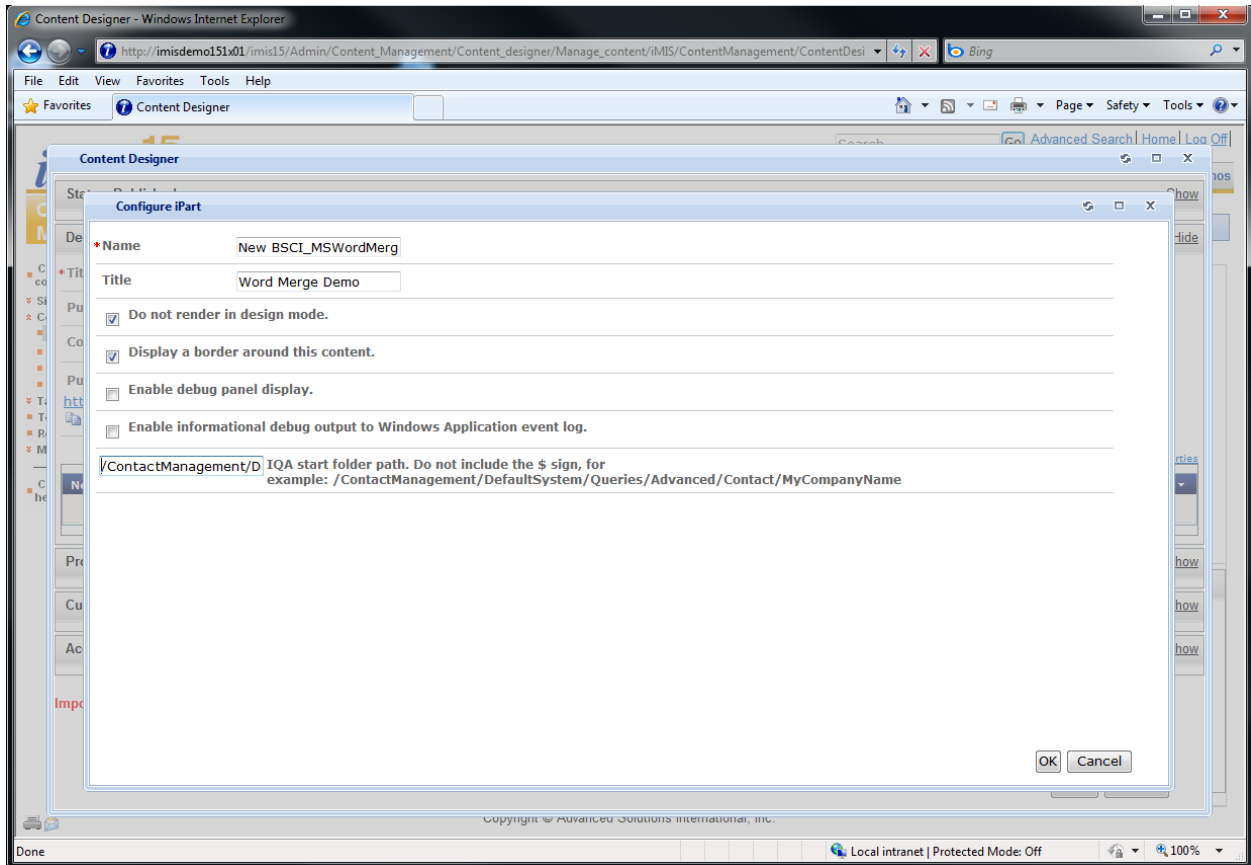
Create a content page, while in design or edit mode select the 'add content' link in the center of the page.



Choose the Content Management folder and check the 'BSCI Word Merge iPart' and click OK.



The Configure iPart page opens and this is where you tell the content how to use your iPart on that respective page. The iPart itself can be used on multiple pages and each time you add it to content you must set-up the iPart like below.



Set the iPart properties

Here is a description of the iPart properties used to configure the iPart for use in content.

Name

Default internal CMS name of the iPart, we don't recommend changing, leave the default value.

Title

Renders at the top of the main iPart display panel, type a representative descriptive name that you want to see on the page. Like 'Department Merge Letters'.

Do Not Render In Design Mode

We recommend always checking this option. No need to run any code while viewing iPart placement in the iMIS CMS designer.

Display A Border Around Content

We recommend always checking this option for a crisp, clean look.

Enable Debug Panel Display

If checked an additional panel is displayed to assist in debugging. The debug panel displays certain environmental characteristics of the iMIS install and iPart. Not necessary for normal operations.

Enable Informational Debug Output

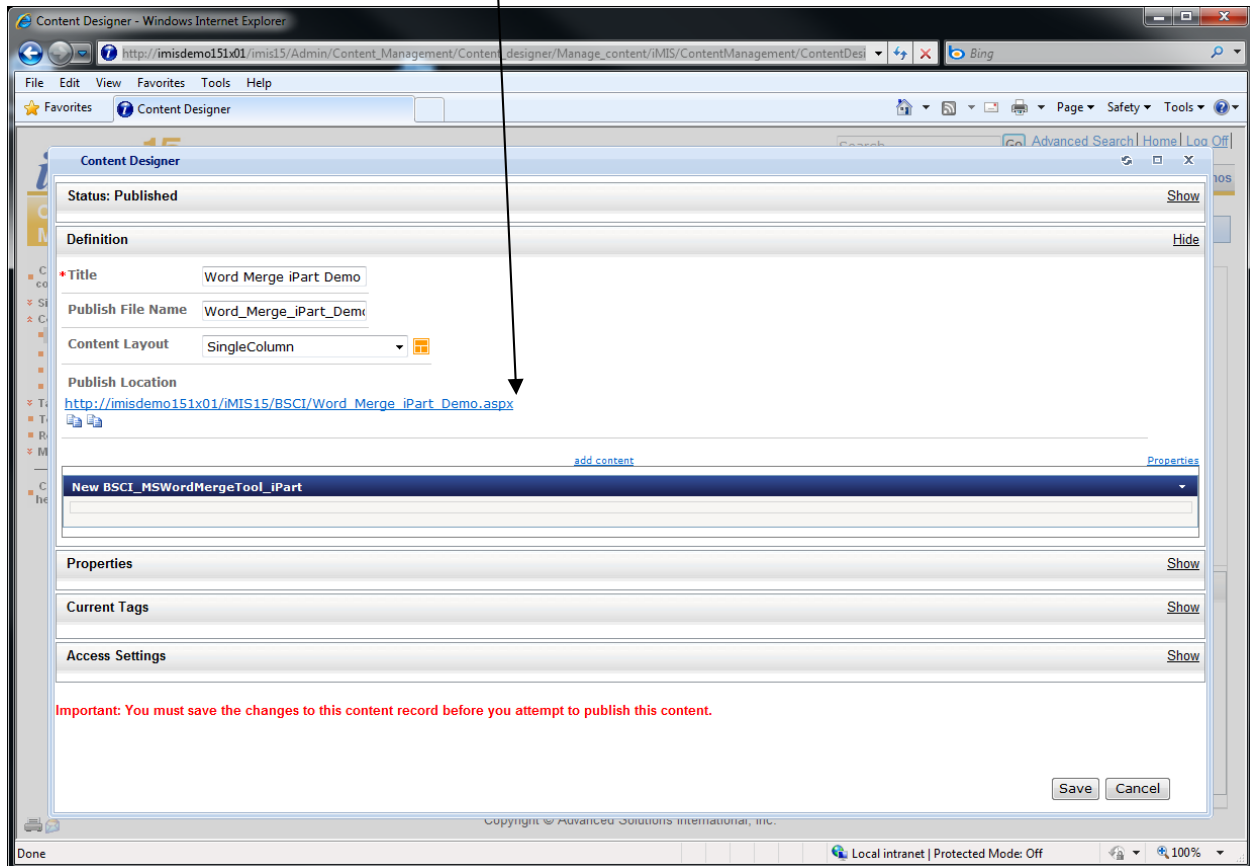
Generally is left unchecked, can be checked to enable verbose debugging to the Windows event Application log to assist in resolving a problem. Not necessary for normal operations.

IQA Start Folder Path

This setting allows the control that browses the IQA document tree to always start at a specific place in the tree speeding up access to IQAs. Especially useful if the iPart is intended for a specific type of letter/IQA combination.

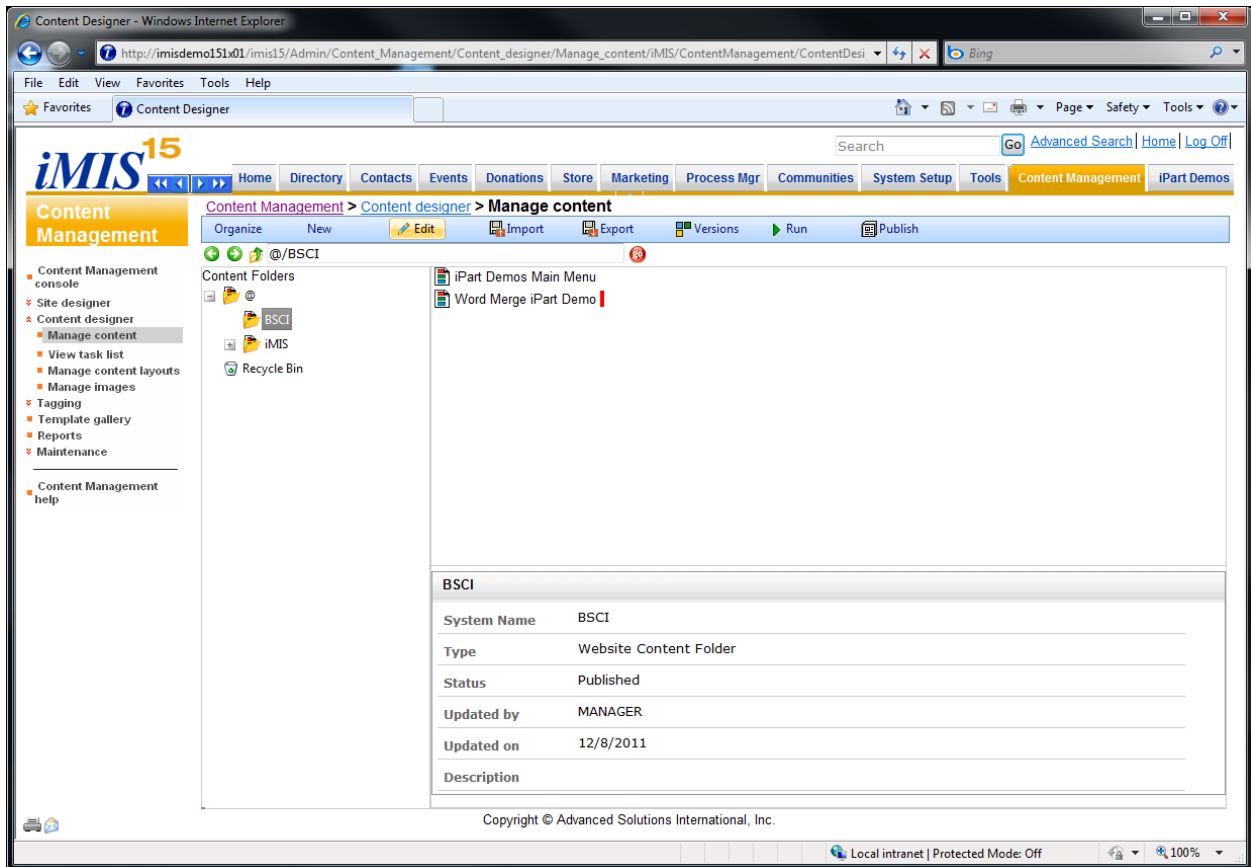
Click 'OK' after filling out the property settings.

You should see the graphical representation of how the iPart looks in the content below. In design mode (when using the iMIS CMS) you do not see the normal default iPart display panel.

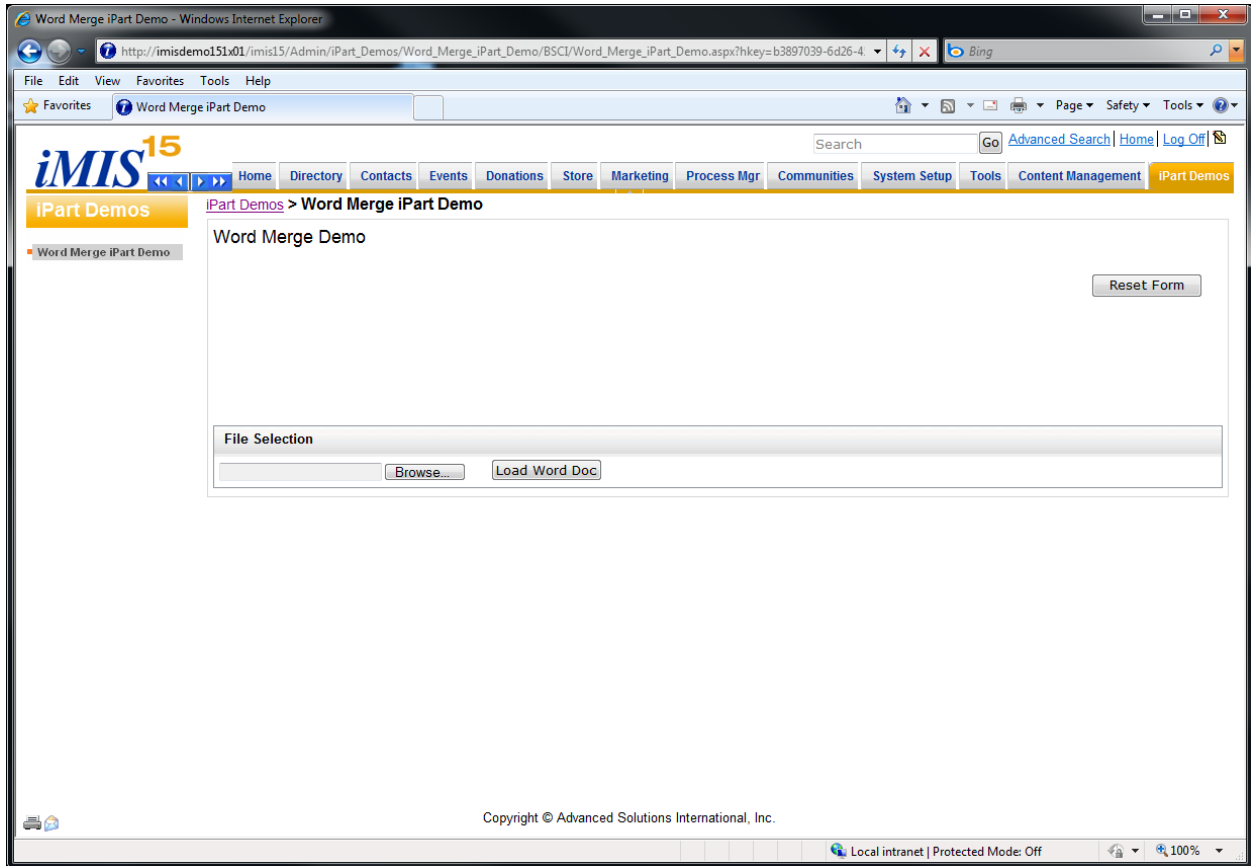


Click Save.

Then publish the content and any related navigation normally.

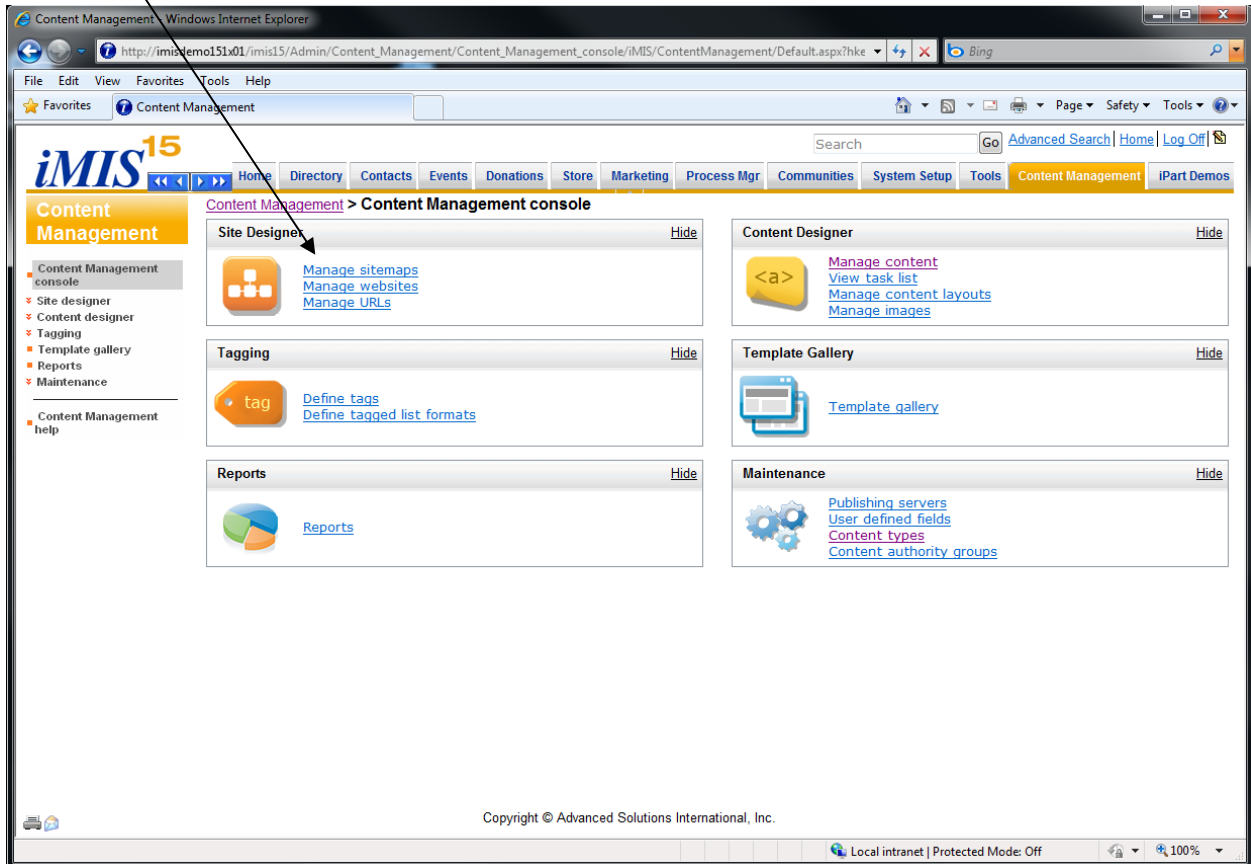


Drill out to the iPart using navigation and you should see the iPart's normal default display panel indicating the iPart is loaded and ready to use.

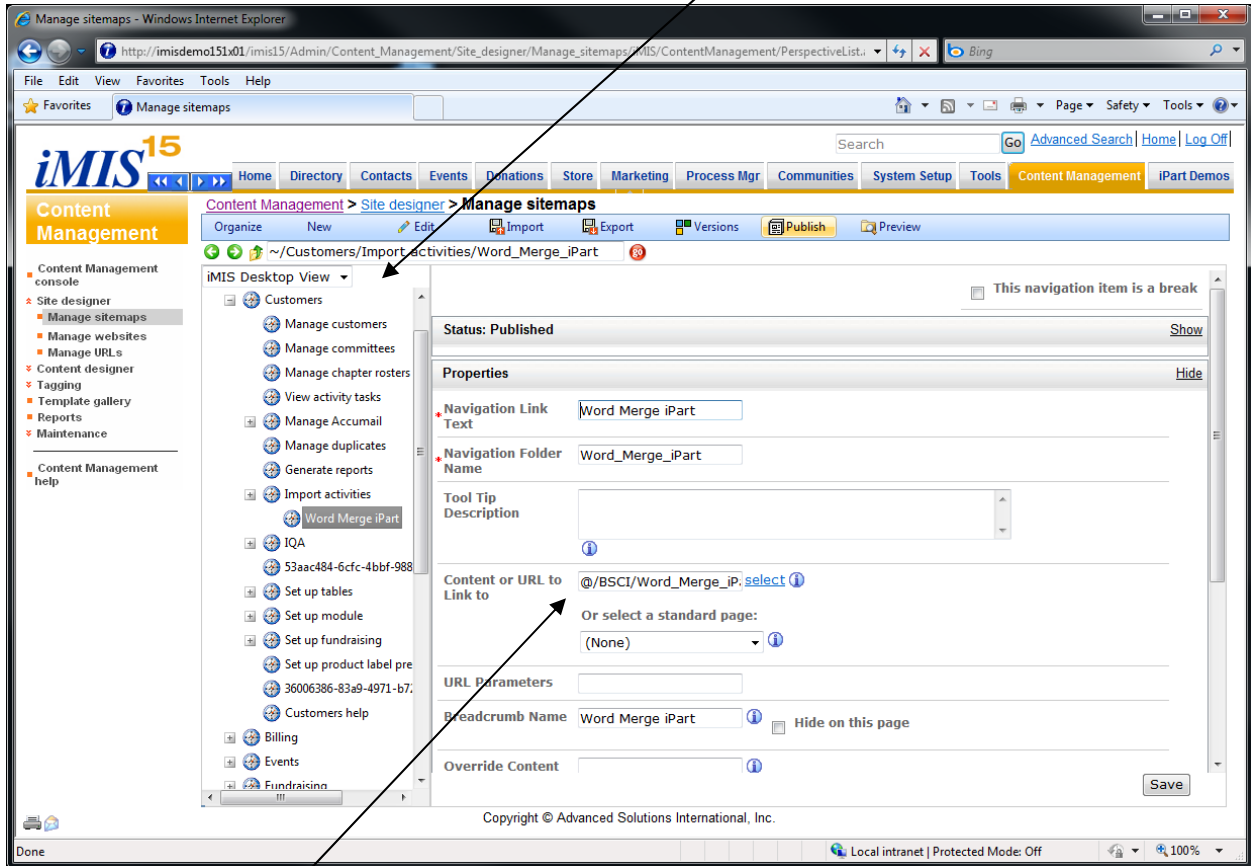


To Place the iPart in Navigation for use iMIS Desktop

You need WCM to consume an iPart in iMIS CMS content. If you have WCM and have added the iPart to content then you can display the iPart in the iMIS desktop by following these steps. Go to 'Manage sitemaps' on the main content management page in WCM.



Make sure you are using site designer and are editing the 'Desktop View' as you add the navigation node to the tree.



Choose the content with the Word Merge iPart as the content to link to.

Save and publish the new sitemap normally.

In the iMIS desktop drill-out to the new navigation node with the iPart and you should see the iPart loaded and ready to use.

